

Accessory Luggage Shade Package Kit

IR 05JA16

PART NO.

94526392

SHEET **1** OF **3**

ALL INFORMATION WITHIN
ABOVE BORDER TO BE PRINTED
EXACTLY AS SHOWN ON 8.5 x 11
WHITE 16 POUND NON-BOND
RECYCLABLE PAPER.
PRINT ON BOTH SIDES, EXCLUD-
ING TEMPLATES.
TO BE UNITIZED IN ACCORDANCE
WITH GM SPECIFICATIONS.

DATE	REVISION	AUTH	DR
05JA16	Initial Release - Gongnyeon Kim	2401141	

TITLE

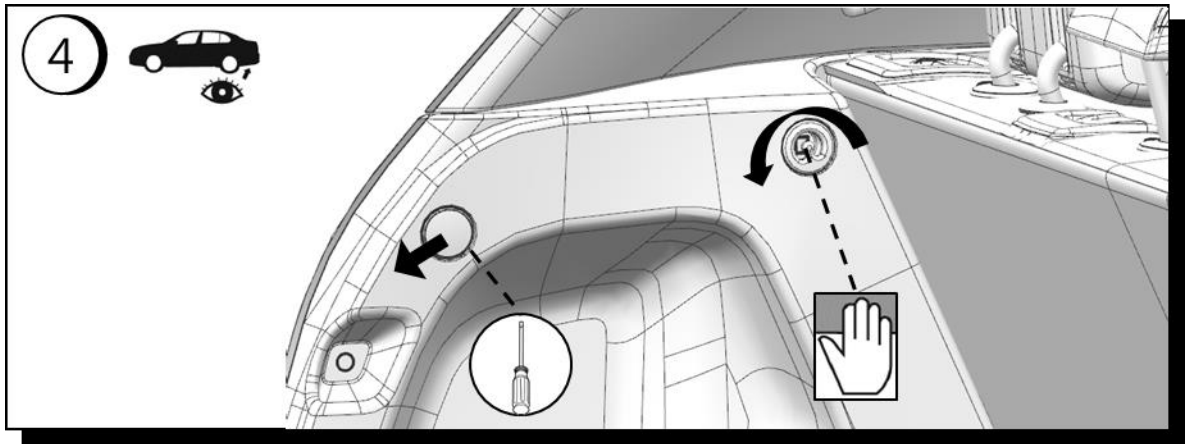
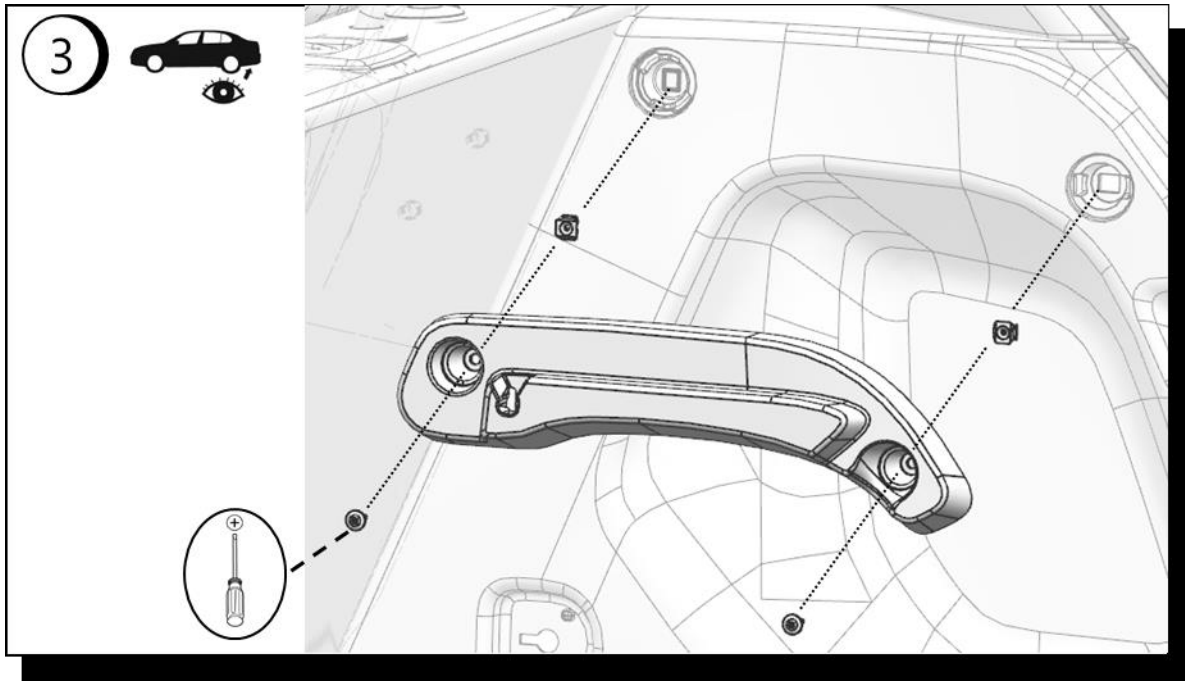
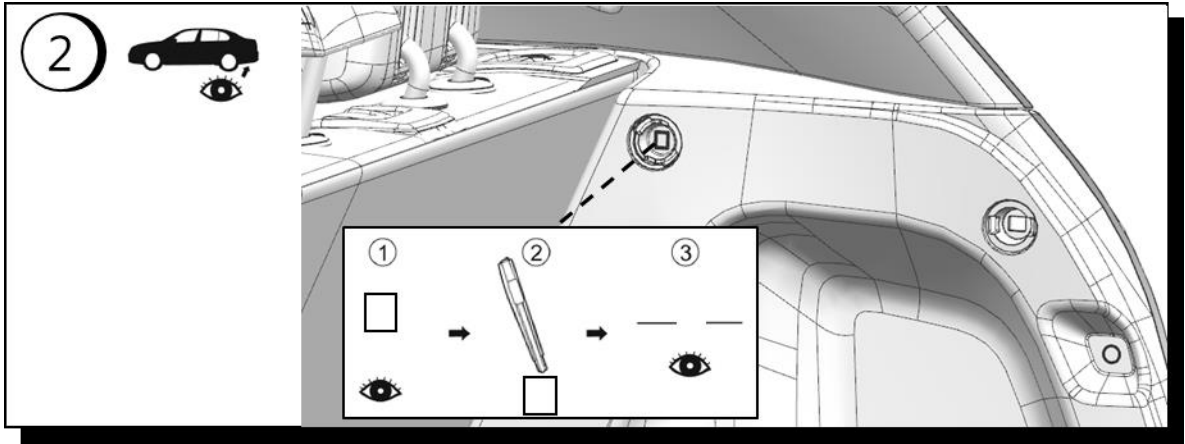
INSTALLATION INSTRUCTIONS

Accessory Luggage Shade Package Kit

PART NO.

94526392

SHEET **1** OF **3**



Accessory Luggage Shade Package Kit

IR 05JA16

PART NO.

94526392

SHEET

2 OF 3

ALL INFORMATION WITHIN ABOVE BORDER TO BE PRINTED EXACTLY AS SHOWN ON 8.5 x 11 WHITE 16 POUND NON-BOND RECYCLABLE PAPER. PRINT ON BOTH SIDES, EXCLUDING TEMPLATES. TO BE UNITIZED IN ACCORDANCE WITH GM SPECIFICATIONS.

DATE	REVISION	AUTH	DR
05JA16	Initial Release - Gongnyeon Kim	2401141	

TITLE

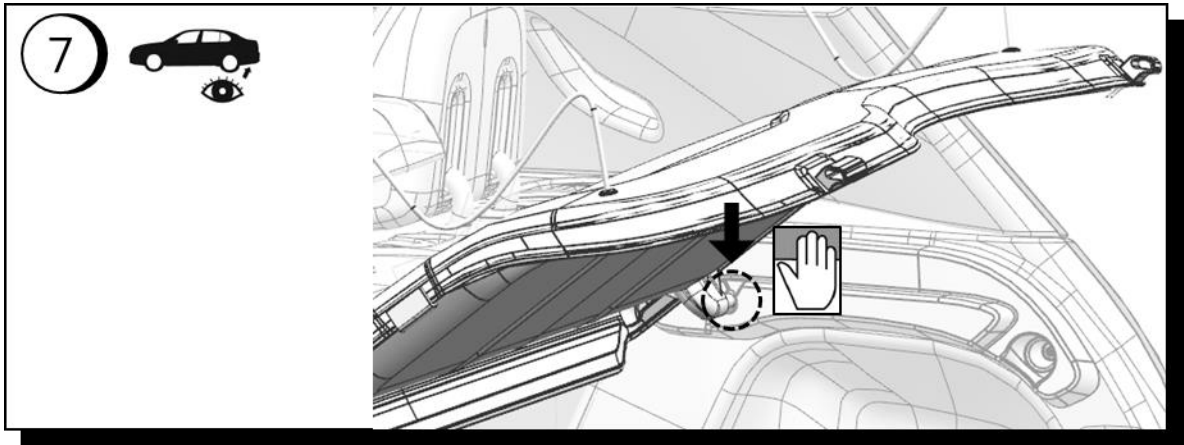
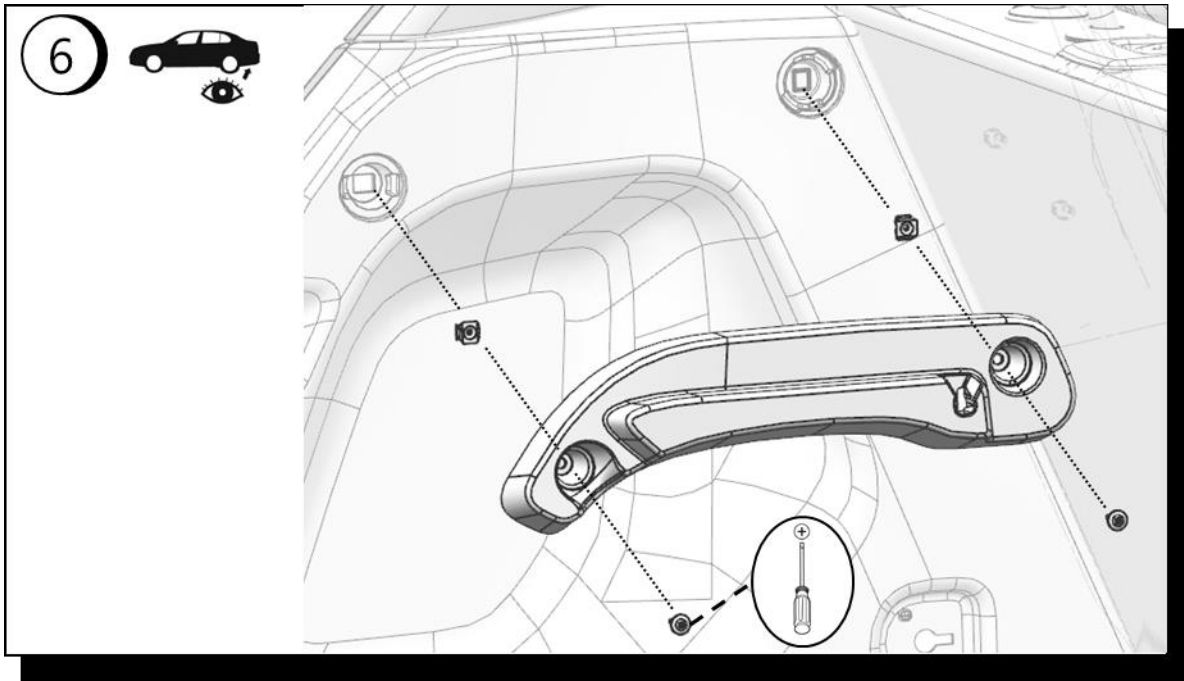
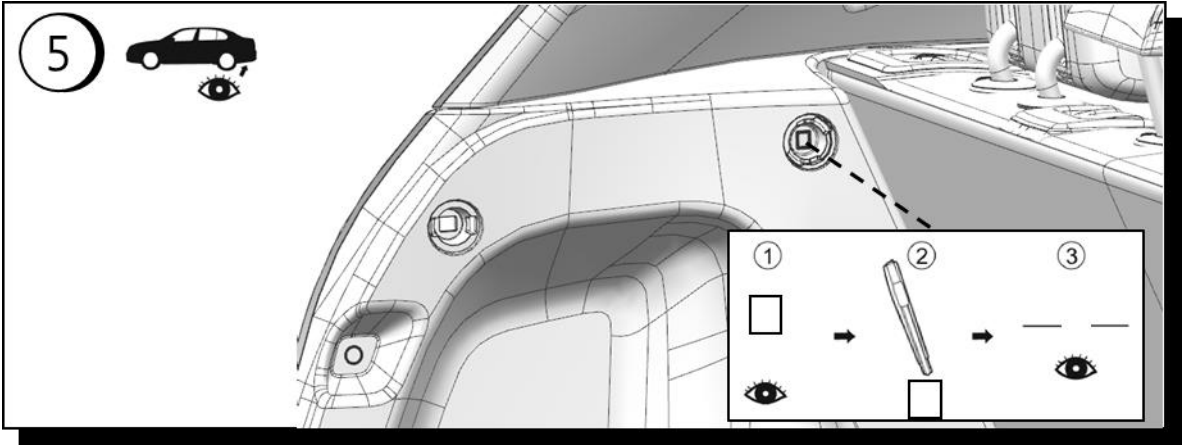
INSTALLATION INSTRUCTIONS
Accessory Luggage Shade Package Kit

PART NO.

94526392

SHEET

2 OF 3



Accessory Luggage Shade Package Kit

IR 05JA16

PART NO.

94526392

SHEET

3

OF

3

ALL INFORMATION WITHIN ABOVE BORDER TO BE PRINTED EXACTLY AS SHOWN ON 8.5 x 11 WHITE 16 POUND NON-BOND RECYCLABLE PAPER. PRINT ON BOTH SIDES, EXCLUDING TEMPLATES. TO BE UNITIZED IN ACCORDANCE WITH GM SPECIFICATIONS.

DATE	REVISION	AUTH	DR
05JA16	Initial Release - Gongnyeon Kim	2401141	

TITLE

INSTALLATION INSTRUCTIONS
Accessory Luggage Shade Package Kit

PART NO.

94526392

SHEET

3

OF

3